



**RB42**  
RADIAL TIRE

# ENSURING DURABILITY IMPROVING EFFICIENCY



# RB42 E-4 TL

Yokohama RB42™ is an all steel radial tire that has durability and versatility to handle the toughest environments. It also includes an advanced casing that is specifically designed to resist cuts and punctures while its unique deep tread and sidewall designs are specifically tailored for highly specialized applications.



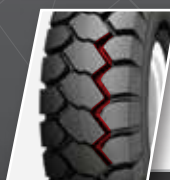
## LARGE CENTER BLOCKS

increase resistance to cuts and enhances overall wear.



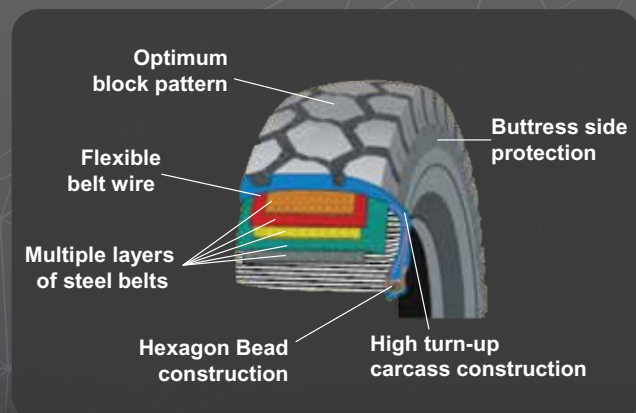
## HIGH TURN-UP CARCASS CONSTRUCTION

protects against exterior damage and sidewall cuts; also offers greater lateral stiffness for better riding comfort.



## ZIG-ZAG GROOVE PATTERN

provides better traction on muddy, soft or loose surfaces.



RIGID DUMP TRUCK

Size	Tread Compound	Star Rating	Rim Diameter	Rim Size	TKPH	TMPH	Outer Diameter		Section Width		Non Skid Depth		Recommended Speed		Inflation Pressure		Load index & Speed Rating
			inch				mm	inch	mm	inch	mm	1/32 <sup>nd</sup>	kmph	mph	kpa	psi	
18.00R33	CP-S	★★	33	13.00-2.5	135	92	1870	74	513	20	55.3	70.0	50	30	700	102	191B
18.00R33	CP	★★	33	13.00-2.5	168	115	1870	74	513	20	55.3	70.0	50	30	700	102	191B
18.00R33	HR	★★	33	13.00-2.5	250	171	1870	74	513	20	55.3	70.0	50	30	700	102	191B
24.00R35	CP-S	★★	35	17.00-3.5	253	173	2170	85	656	26	63.5	81.0	50	30	700	102	209B
24.00R35	CP	★★	35	17.00-3.5	277	190	2170	85	656	26	63.5	81.0	50	30	700	102	209B
24.00R35	REG	★★	35	17.00-3.5	304	208	2170	85	656	26	63.5	81.0	50	30	700	102	209B
24.00R35	HR	★★	35	17.00-3.5	422	289	2170	85	656	26	63.5	81.0	50	30	700	102	209B
27.00R49	CP-S	★★	49	19.50-4.0	350	240	2683	106	735	29	73.7	93.0	50	30	700	102	223B
27.00R49	CP	★★	49	19.50-4.0	430	295	2683	106	735	29	73.7	93.0	50	30	700	102	223B
27.00R49	REG	★★	49	19.50-4.0	535	366	2683	106	735	29	73.7	93.0	50	30	700	102	223B
27.00R49	HR	★★	49	19.50-4.0	615	421	2683	106	735	29	73.7	93.0	50	30	700	102	223B
33.00R51	CP-S	★★	51	24.00-5.0	480	329	3061	121	920	36	91	115.0	50	30	700	102	235B
33.00R51	CP	★★	51	24.00-5.0	600	411	3061	121	920	36	91	115.0	50	30	700	102	235B
33.00R51	REG	★★	51	24.00-5.0	680	466	3061	121	920	36	91	115.0	50	30	700	102	235B

Disclaimer: The specifications mentioned in this document are subject to change with no prior intimation or notice. Please visit our website for updated information and details.